



# COMPANY PROFILE

---

Shenzhen Cargoes Depot Modern Logistics Co., Ltd.



# About Us



Shenzhen Cargoes Depot Modern Logistics Co., Ltd. was established in 2015, with its headquarters located in Luohu, Shenzhen, and a registered capital of 10 million RMB.

## WE ARE

---

A dedicated logistics provider with a strong network of agents and branches across China.

Members of WCA and JC TRANS, and hold certifications for sea (NVOCC), air (CATA), and USA (FMC) shipments.

## WE OFFER

---

Ocean and air transportation, trucking, multimodal transport, bonded logistics, supply chain design, customs clearance, and CIQ services.

## OUR VALUE

---

Pioneering, Enterprising, Cooperating, Outstanding

## CORE STRATEGIC OBJECTIVES

---

To be a global Supply chain Management company

# Qualification



# Our Branch



- Shenzhen, China**  
Headquarter & Domestic Branch Office
- Changsha, Hunan, China**  
Branch Office
- Hong Kong, China**  
Subsidiary Company

# Meet Our Team



\*Image 3: General General Manager Luke Li, is invited for an exclusive interview on CCTV (China Central Television, the leading state broadcaster and a major media outlet in China).

# Our clients



**LESSO 联塑**

**TK 東江集團**  
TK GROUP

**YUTO**

**TCL 华星光电**  
CSOT

**CLU 科陆电子**

**CCTC 三环集团**  
先进陶瓷专家

**科大讯飞**  
IFLYTEK

**CSCEC 中国建筑五局**

**KONKA 康佳**

**C&D 建发集团**

**BIEL 伯恩光学**

**东方雨虹**  
ORIENTAL YUHONG

## Our Main Services



Ocean Freight



Air Freight



Bulk Cargo



Logistics

# Ocean Freight



## Africa

Major ports across East, West, and South Africa, as well as parts of inland Africa.

## Asia

Malaysia, Indonesia, Vietnam, Thailand, Myanmar, Cambodia, the Philippines, Singapore, Japan, South Korea, Taiwan, and others.

## Europe

Italy, the UK, Germany, and France, covering major ports across Eastern and Western Europe, as well as inland areas requiring truck delivery.

## Middle East, India, Pakistan, Red Sea.

India, Bangladesh, Pakistan, Saudi Arabia, UAE, Iran, Oman, Yemen, Qatar, and others.

## Ocean Freight Direct Route

Indonesia Ocean Freight  
Vietnam Ocean Freight & Trucking Direct Route

### Booking

Booking and Real-time Tracking

### Inspection / Packaging

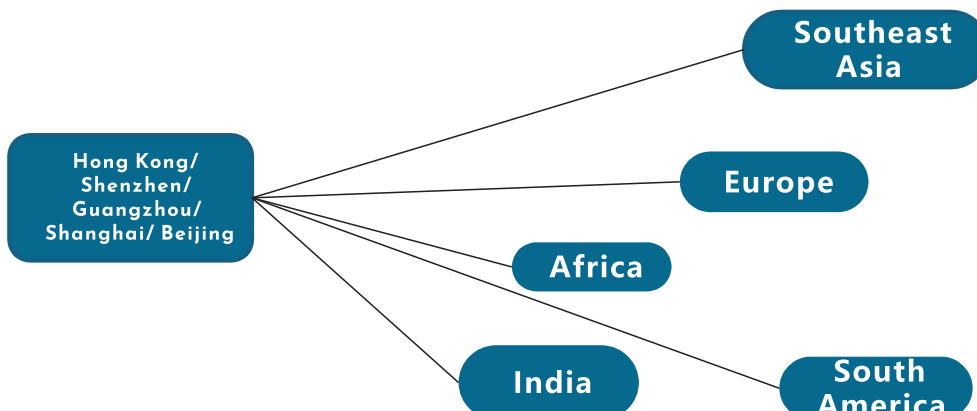
Packaging Repair and Strapping  
We provide packaging repairs, strapping, and panel covering to ensure goods are secure during transport

### Assit with Documents

### Supporting Service

- Trucking: Domestic containers, dedicated trucks, LCL, cross-border, and China-Australia routes.
- Customs Clearance: Import/export, general trade, repairs, ATA Carnet, and temporary entries.
- Warehousing: Regular and bonded storage solutions.

# Air Freight



# Bulk Cargo



## EPC Projects Logistics Service Area

### Africa

East Africa / West Africa / South Africa /  
North Africa Main countries: Kenya/Uganda/Rwanda/  
Zambia/ Tanzania/ Mozambique/ Zimbabwe/ Nigeria/  
Cote d'Ivoire/ Ghana/ Cameroon/ South Africa/ Namibia/ Algiers etc.

### Southeast Asia

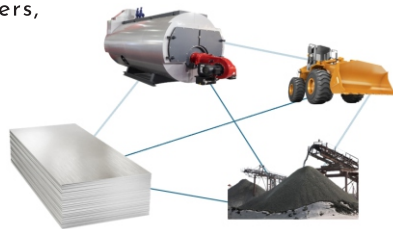
Indonesia/Vietnam/Cambodia/Thailand/Philippines/Malaysia/Singapore etc.

### Middle East and India and Pakistan

Saudi Arabia/UAE/Oman/India/Pakistan/Nepal etc.

#### Machines and Equipment:

Engineering machinery and equipment,  
large machinery and equipment, boilers,  
distillation kettles, presses, dryers,  
mobile homes, etc.



#### Machines and Equipment:

Yachts, sailboats, barges, semi-trailers, cement trucks,  
low-bed trucks, excavators, bulldozers, loaders, pavers,  
rollers, engineering vehicles, buses, cars, off-road vehicles,  
tow trucks, container trucks, dump trucks, cranes, large  
tank trucks, liquid transport trucks, cleaning trucks,  
watering trucks, etc.

#### Materials

Coiled steel, steel plates, seamless steel pipes,  
wire rods, rebars, profiles, oil pipelines, etc.

#### Materials

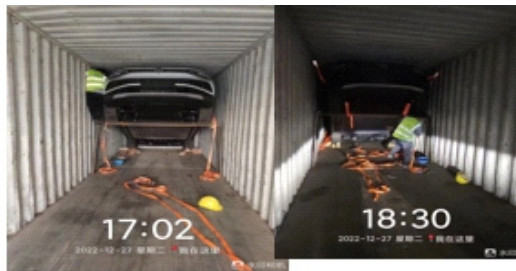
Coal, ore, cement, crude oil, grain, sand, etc.



# Case Studies: Ocean Freight



**General cargo** ✓



根据车型与装载方式的不同，一个40HQ的集装箱可容纳2-4辆新能源车。新能源车装载，需要提前将新能源车运输到码头指定作业场所，再由专业人士进行装卸、绑扎操作。

集装箱装载新能源车的技术，如今已相对成熟。通过车架安装技术，提升集装箱空间利用率；通过拖轮式支撑固定技术，以及反向绑扎平衡技术，确保车辆的稳定，避免晃动产生划痕。

**Dangerous goods** ✓

• **固定:**



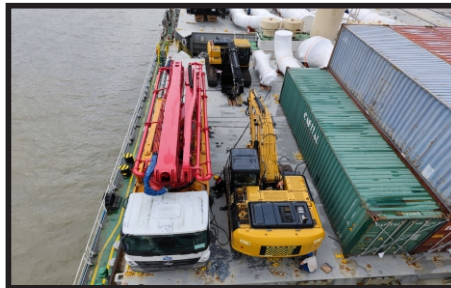
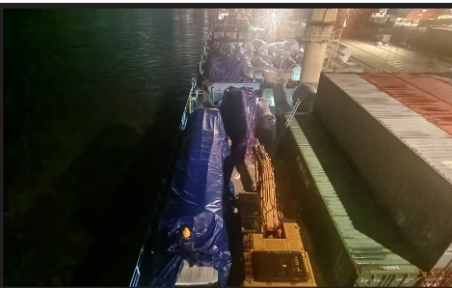
• **挂网+贴大危标 (危标需要集装箱4面都必须贴紧，标在海上吹掉目的港有1000美金罚金)**



危险货物 托运单 (Dangerous Goods Manifest)		托运人 (Shipper)		收货人 (Consignee)	
品名 (Name)	UN 3028 锂离子电池 (UN 3028 Lithium-ion batteries)	数量 (Quantity)	1000	数量 (Quantity)	1000
规格 (Specification)	3.7V 2600mAh	重量 (Weight)	1000kg	重量 (Weight)	1000kg
包装 (Packaging)	UN 38.3 测试合格	体积 (Volume)	1000L	体积 (Volume)	1000L
危险等级 (Hazard Class)	9	危险标志 (Hazard Label)	9	危险标志 (Hazard Label)	9
其他 (Remarks)	请按照 IATA DGR 规定进行包装和运输。	其他 (Remarks)		其他 (Remarks)	

危险货物 托运单 (Dangerous Goods Manifest)	
品名 (Name)	UN 3028 锂离子电池 (UN 3028 Lithium-ion batteries)
数量 (Quantity)	1000
重量 (Weight)	1000kg
体积 (Volume)	1000L
危险等级 (Hazard Class)	9
危险标志 (Hazard Label)	9
其他 (Remarks)	请按照 IATA DGR 规定进行包装和运输。

Special  
containers



# Case Studies: Air Freight



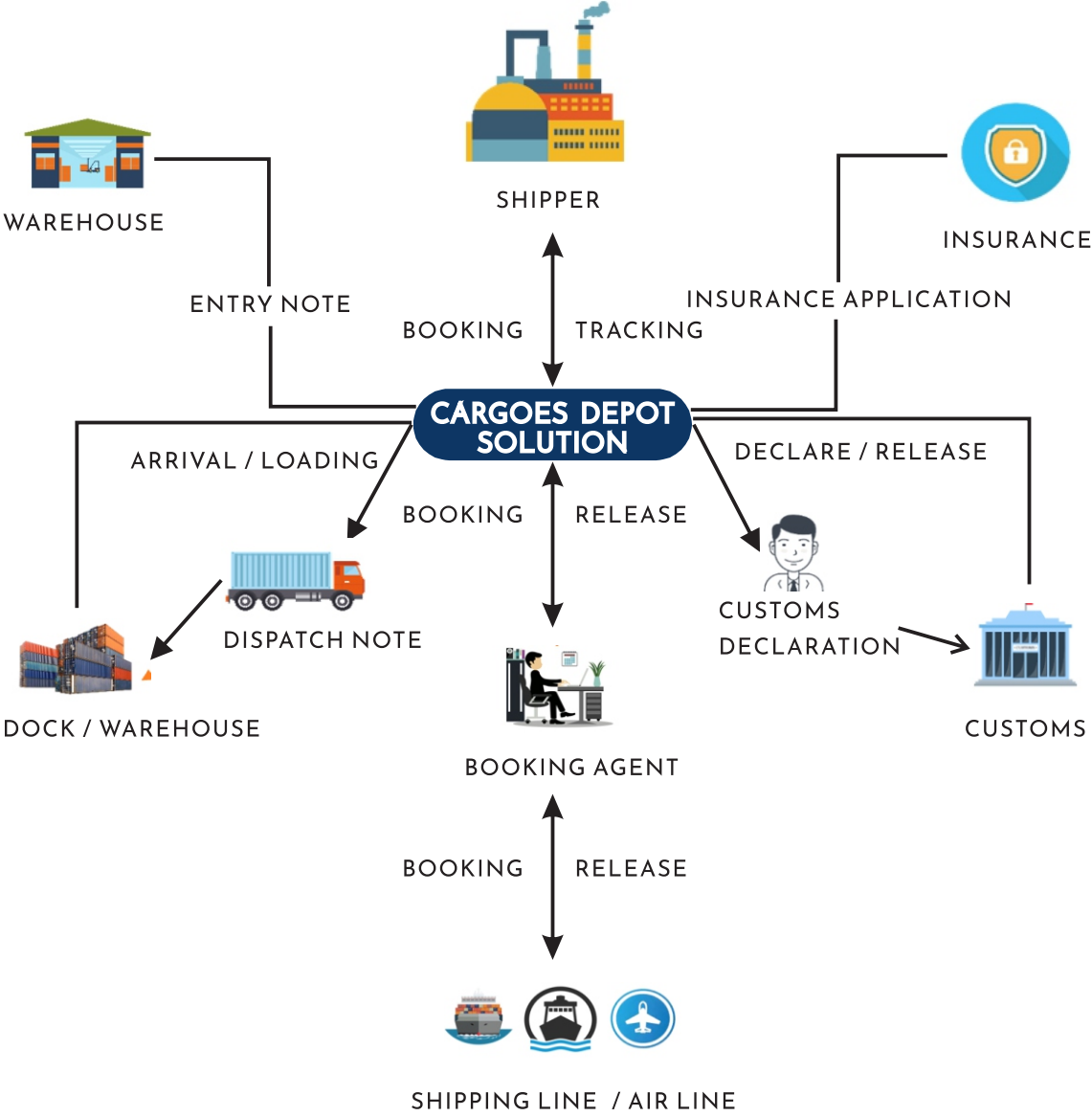
## Terminal photos



# Bulk cargo



# Solutions Advantage



## Skilled Assistance

Our independent sales and operations teams ensure excellent service and high efficiency





# Contact Us

## **Shenzhen Cargoes Depot Modern Logistics Co., Ltd.**

Address: 701-702, Block A, Lushan Building,  
No.3023, Chunfeng Rd., Luohu District,  
Shenzhen, Guangdong, China

### **Reus Ye Overseas Manager**

Cell: 86-18666669721  
Tel: 86-755-22989590  
Fax: 86-755-22986577  
Email: [overseas01@cargoesdepot.com](mailto:overseas01@cargoesdepot.com)

### **Sarah. J. Kang Sales Manager**

Cell: 86-13488749291  
Tel: 86-755-22989590  
Fax: 86-755-22986577  
Email: [sarah@cargoesdepot.com](mailto:sarah@cargoesdepot.com)

### **Bob Guo Overseas Sales**

Cell: 86-18688954443  
Tel: 86-755-22989590  
Fax: 86-755-22986577  
Email: [overseas19@cargoesdepot.com](mailto:overseas19@cargoesdepot.com)

